



HOLLAND HALL

Profile

2011-2012

5666 East 81st Street, Tulsa, OK 74137-2099 (918) 481-1111

Fax (918) 879-4772

CEEB Code: 373-615

Head of School

John D. Marshall
Ext. 733
jdmars@hollandhall.org

Head of Upper School

Dennis L. Calkins
Ext. 742
dcalkins@hollandhall.org

Director of Admission and Financial Aid

Richard P. Hart
Ext. 740
rhart@hollandhall.org

Director of College Counseling

Kathleen O. Housh
Ext. 719
khoush@hollandhall.org

College Counseling Staff

Ronda Cooper – *College Counselor*
Ext. 230
rcooper@hollandhall.org

Brent Casey – *College Counselor*

Ext. 718
bcasey@hollandhall.org

Laura Vance – *Administrative Assistant*

Ext. 726
lvance@hollandhall.org

THE SCHOOL – Holland Hall is an independent, coeducational, Episcopal day school that provides a challenging, comprehensive educational experience grounded in a rigorous liberal arts, college preparatory curriculum that promotes critical thinking and life-long learning. The 324 students attending ninth through twelfth grade abide by an honor code. Holland Hall's 50 faculty members have an average 19 years teaching experience and 62 percent hold advanced degrees. 99 percent of Holland Hall graduates attend post high school-graduate educational opportunities.

Holland Hall has been recognized by the Oklahoma State Regents for Higher Education for superior college preparation and is one of only three Oklahoma educational institutions to belong to the Center for Academic Integrity.

In a recent Gallup Student Poll designed to measure engagement, well-being and hope, Holland Hall students evidenced a much stronger than average sense of enjoyment, challenge and support than most students surveyed. Holland Hall students reportedly also stay much more engaged in their educational process than most of the 400,000 students surveyed nationwide.

Holland Hall is the only school in Oklahoma, and one of 32 independent schools nationwide, to belong to the prestigious School Year Abroad consortium.

Holland Hall's Chapman Library seeks to create well-read and information literate students by providing a vast collection of books, periodicals, media and electronic resources--from general reference to peer reviewed databases thus preparing for scholarly work at the university level.

ACCREDITATION AND MEMBERSHIP – Holland Hall is accredited by the Independent Schools Association of the Southwest; is recognized by the Oklahoma State Regents for Higher Education, is a member of the National Association of Independent Schools, National Association for College Admission Counseling, Great Plains Association for College Admission Counseling, Association of College Counselors in Independent Schools, College Board, Education Conservancy and since 1968, Cum Laude.

GRADUATION REQUIREMENTS

English	4 credits
Foreign Language	3 credits
Mathematics	3 credits
Science	3 credits
Social Studies	3 credits
Religious Studies	.5 credit
Fine Arts	1 credit
Athletics	3.5 credits

Additional non-departmental requirements include:

- Wellness (ninth and twelfth grades) - one semester class dealing with social and emotional health.
- Junior Seminar - one semester class dealing with college selection and application process.
- A 40 hour senior internship/shadowing experience.
- A minimum of 21 credits is necessary for graduation.

HOLLAND HALL OVERVIEW

Total Enrollment (preK - 12)	957
Teacher to Student Ratio	9:1
Upper School Enrollment	324
Class of 2011	76
Multicultural Representation	16%
Receiving Financial Aid	18%

Holland Hall has joined the movement away from Advanced Placement in order to offer rigorous, interdisciplinary courses stressing higher level thinking skills.

CLASS OF 2011

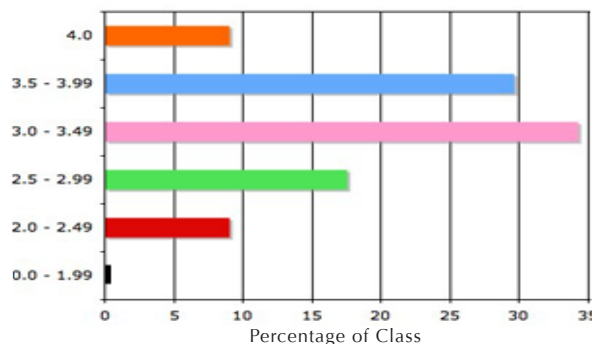
DISTINCTIONS

- 1 National Merit Finalist
- 3 National Merit Commended
- 1 National Achievement Finalist

TESTING PROFILE

SAT – 43 students tested
Middle 50% –
Critical Reading: 560-670
Math: 610-710
Writing: 580-680
ACT – 68 students tested
Middle 50% 25-30

2011 GPA DISTRIBUTION



GRADE SCALE

- A = 90-100
- B = 80-89
- C = 70-79
- D = 60-69

Honors and Advanced Placement courses are weighted with an additional value of .34

Holland Hall is a member of the Joint Research and Planning Office (JRPO) consortium comprised of 50 academically rigorous and selective independent co-ed day schools from all regions of the United States. Holland Hall consistently ranks in the top 10 percent as one of the most demanding and rigorous schools in overall grade point average.

STUDENT ACCOMPLISHMENTS:

- The class of 2011 was awarded over \$4 million in scholarships.
- Holland Hall students are working on their 15th Habitat for Humanity house.
- Holland Hall teams were SPC finalists in 6 of 17 sports - more than any other SPC coed school
- 13 student athletes from the class of 2011 will play college level sports this year

COLLEGE AND UNIVERSITIES HOLLAND HALL GRADUATES HAVE ATTENDED WITHIN THE LAST FOUR YEARS

- | | |
|---------------------------------|--------------------------------------|
| Abilene Christian University | Rhodes College |
| American University | Rice University |
| Arizona State University | Rockhurst University |
| Auburn University | Saint Louis University |
| Babson College | Sch. of the Art Institute of Chicago |
| Barnard College | Southern Methodist University |
| Baylor University | Southwestern College |
| Beloit College | Southwestern University |
| Bennington College | St. Olaf College |
| Berklee College of Music | Stanford University |
| Boston University | Texas A & M University |
| Brown University | Texas Christian University |
| Bucknell University | Texas Tech University |
| Carleton College | Trinity College |
| Case Western Reserve University | Trinity University |
| Claremont McKenna College | Tufts University |
| College of Charleston | Tulane University |
| Colorado College | Vanderbilt University |
| Colorado School of Mines | Villanova University |
| Colorado State University | Virginia Commonwealth University |
| Dartmouth College | Virginia Military Institute |
| DePaul University | Wake Forest University |
| DePauw University | Washington and Lee University |
| Drake University | Washington University in St. Louis |
| Duke University | Wheaton College |
| Emory University | William Jewell College |
| Fordham University | Yale University |
| Furman University | United States Air Force |
| George Washington University | University of Arizona |
| Georgetown University | University of Arkansas |
| Hamilton College | University of California @ Davis |
| Harvard University | University of Central Oklahoma |
| Hendrix College | University of Chicago |
| Howard University | University of Colorado |
| Idaho State University | University of Dallas |
| Ithaca College | University of Denver |
| Kalamazoo College | University of Georgia |
| Kansas City Art Institute | University of Kansas |
| Kansas State University | University of Memphis |
| Kenyon College | University of Michigan |
| Knox College | University of Mississippi |
| Lancaster University U.K. | University of Missouri |
| Lake Forest College | University of Montana |
| Lewis & Clark College | University of North Carolina |
| Michigan State University | University of Notre Dame |
| Middlebury College | University of Oklahoma |
| Northeastern University | University of Pennsylvania |
| Northwestern University | University of Pittsburgh |
| New York University | University of Richmond |
| Ohio Wesleyan University | University of San Diego |
| Oklahoma City University | University of the South |
| Oklahoma State University | University of South Florida |
| Pepperdine University | University of Tennessee |
| Pomona College | University of Texas |
| Princeton University | University of Tulsa |
| Rhode Island School of Design | University of Washington |

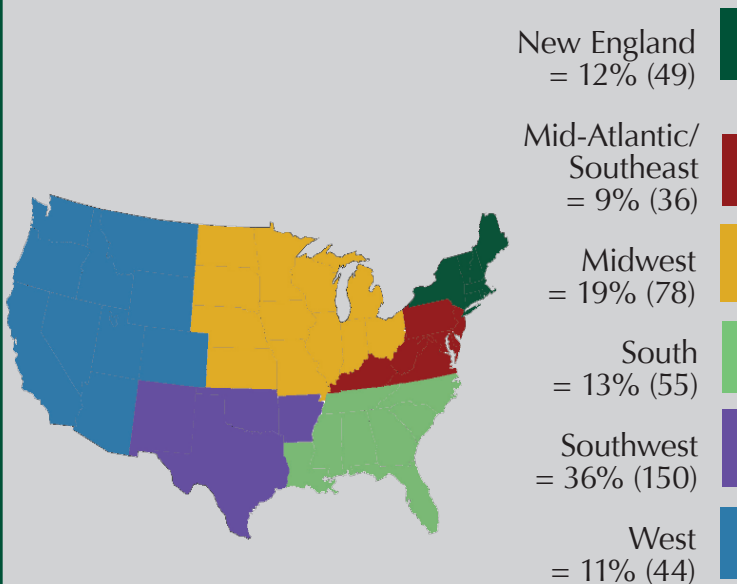
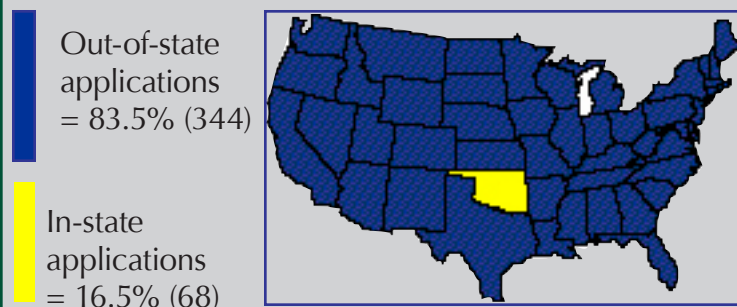
STATISTICAL OVERVIEW OF THE CLASS OF 2011

Seniors = 76

Total applications submitted = 412

Applications to private colleges or universities = 68% (281)

Applications to public colleges or universities = 32% (131)



Matriculated out-of-state = 63%

Matriculated in-state = 37%